



Creating Value in Colombia & Ecuador  
December 2019

## General Advisory

The information contained in this presentation does not purport to be all-inclusive or contain all information that readers may require. You are encouraged to conduct your own analysis and review of Gran Tierra Energy Inc. ("Gran Tierra", "GTE", or the "Company") and of the information contained in this presentation. Without limitation, you should read the entire record of publicly filed documents relating to the Company, consider the advice of your financial, legal, accounting, tax and other professional advisors and such other factors you consider appropriate in investigating and analyzing the Company. You should rely only on the information provided by the Company and not rely on parts of that information to the exclusion of others. The Company has not authorized anyone to provide you with additional or different information, and any such information, including statements in media articles about Gran Tierra, should not be relied upon. No representation or warranty, express or implied, is made by Gran Tierra as to the accuracy or completeness of the information contained in this document, and nothing contained in this presentation is, or shall be relied upon as, a promise or representation by Gran Tierra.

An investment in the securities of Gran Tierra is speculative and involves a high degree of risk that should be considered by potential purchasers. Gran Tierra's business is subject to the risks normally encountered in the oil and gas industry and, more specifically, certain other risks that are associated with Gran Tierra's operations and current stage of development. An investment in the Company's securities is suitable only for those purchasers who are willing to risk a loss of some or all of their investment and who can afford to lose some or all of their investment. You should carefully consider the risks described under the heading "Risk Factors" in the Company's Annual Report on Form 10-K and in the Company's other SEC filings available at [www.grantierra.com](http://www.grantierra.com).

In this presentation, unless otherwise indicated, all dollar amounts are expressed in US dollars. All production, reserves and resources are working interest before royalties ("WI"). Please see the appendices to this presentation for important advisories relating to the Company's presentation of oil and gas information and financial information, including the presentation of non-GAAP measures. Current market values are based on a NYSE share price of US\$0.99 as at close on December 6, 2019 and 367.0 million issued and outstanding shares as of September 30, 2019.

## Forward-Looking Information Advisory

This presentation contains forward-looking statements within the meaning of the United States Private Securities Litigation Reform Act of 1995, Section 27A of the Securities Act of 1933, as amended, and Section 21E of the Securities Exchange Act of 1934, as amended, and financial outlook and forward looking information within the meaning of applicable Canadian securities laws (collectively, "forward-looking statements"). All statements other than statements of historical facts included in this presentation regarding our financial position, estimated quantities and net present value of reserves, business strategy, plans and objectives for future operations, capital spending plans and those statements preceded by, followed by or that otherwise include the words "believe", "expect", "intend", "anticipate", "forecast", "will", "estimate", "target", "project", "goal", "plan", "should" or similar expressions are forward-looking statements. Such forward-looking statements include, but are not limited to, statements about: future projected or target production and the growth of production including the product mix of such production and expectations respecting production growth; our ability to grow in both the near and long term and the funding of our growth opportunities; our possible creation of new

core areas; our prospects and leads; the plans, objectives, expectations and intentions of the Company regarding production, exploration and exploration upside, drilling, permitting, testing and development; Gran Tierra's 2019 capital program including the changes thereto along with the expected costs and the expected allocation of the capital program; and Gran Tierra's financial position and the future development of the Company's business. Statements respecting reserves are forward-looking statements as they involve the implied assessment, based on estimates and assumptions, that the reserves and resources described exist in the quantities predicted or estimated and can be profitably produced in the future. Unrisked prospective resources are highly speculative and do not represent current reserves, future production or even future possible reserves.

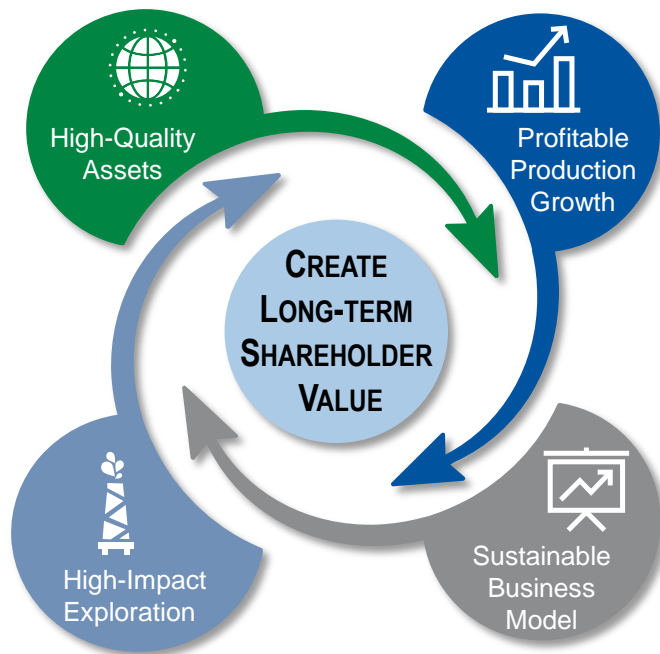
Estimates of future production, cash flow guidance and certain expenses may be considered to be future-oriented financial information or a financial outlook for the purposes of applicable Canadian securities laws. Financial outlook and future-oriented financial information contained in this presentation about prospective financial performance, financial position or cash flows are based on assumptions about future events, including economic conditions and proposed courses of action, based on management's assessment of the relevant information currently available, and to become available in the future. In particular, this presentation contains projected production and operational information for 2019 and 2020. These projections contain forward-looking statements and are based on a number of material assumptions and factors set out above. Actual results may differ significantly from the projections presented herein. These projections may also be considered to contain future-oriented financial information or a financial outlook. The actual results of Gran Tierra's operations for any period will likely vary from the amounts set forth in these projections, and such variations may be material. See above for a discussion of the risks that could cause actual results to vary. The future-oriented financial information and financial outlooks contained in this presentation have been approved by management as of the date of this presentation. Readers are cautioned that any such financial outlook and future-oriented financial information contained herein should not be used for purposes other than those for which it is disclosed herein. The Company and its management believe that the prospective financial information has been prepared on a reasonable basis, reflecting management's best estimates and judgments, and represent, to the best of management's knowledge and opinion, the Company's expected course of action. However, because this information is highly subjective, it should not be relied on as necessarily indicative of future results.

The forward-looking statements contained in this presentation are based on certain assumptions made by Gran Tierra based on management's experience and perception of historical trends, current conditions, anticipated future development and other factors believed to be appropriate. Such statements are subject to a number of assumptions, risks and uncertainties, many of which are beyond Gran Tierra's control, which may cause actual results to differ materially from those implied or expressed by the forward-looking statements. These include the factors discussed or referenced under the heading "Part 1. Item 1A. Risk Factors" in Gran Tierra's Annual Report on Form 10-K, under the heading "Part II. Item 1A. Risk Factors" in Gran Tierra's Quarterly Reports on Form 10-Q and in the other reports and filings with the Securities and Exchange Commission.

All forward-looking statements speak only as of the date on which such statements are made, and Gran Tierra undertakes no obligation to correct or update any forward-looking statements, whether as a result of new information, future events or otherwise, except as required by applicable law. Gran Tierra's forward-looking statements are expressly qualified in their entirety by this cautionary statement.

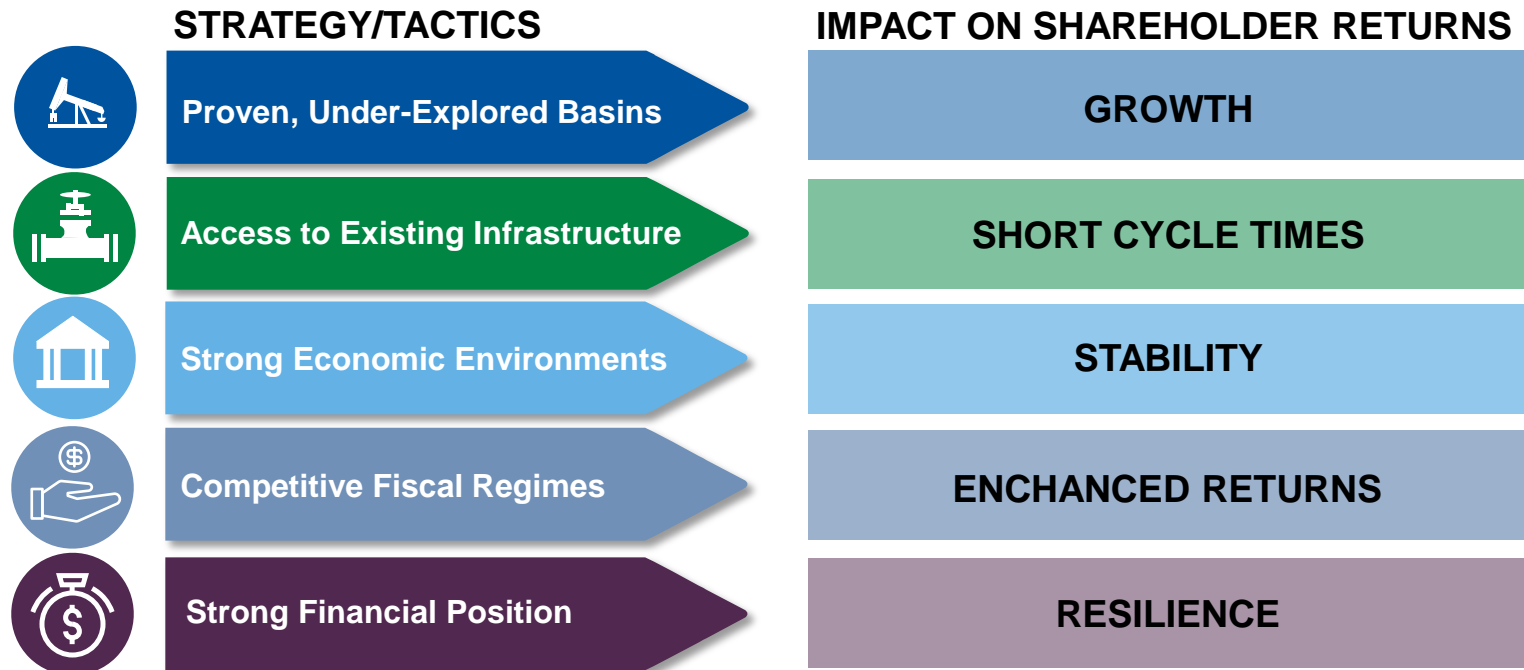
# REASONS TO INVEST IN GRAN TIERRA

- ✓ Balanced portfolio: production, development & exploration, 100% oil
- ✓ Focused on low cost, conventional oil & gas developments with low declines, >95% operated
- ✓ Access to infrastructure with spare capacity & ability to monetize at Brent pricing
- ✓ Strong balance sheet, resilient to volatile oil prices
- ✓ Active share buyback program during 2019 YTD returning capital to shareholders
- ✓ Focused on generating free cash flow in 2020 & beyond
- ✓ World class exploration portfolio



**Sustainable business model, expected to be fully funded by forecasted cash flows**

# GRAN TIERRA: FULL-CYCLE E&P DELIVERING RETURNS



Gran Tierra's strategy and tactics are focused on value creation for shareholders

# ENVIRONMENTAL, SOCIAL & GOVERNANCE EXCELLENCE



## Environment

- **NaturAmazonas**, a reforestation project with *Conservation International* <sup>1</sup>
  - Largest voluntary O&G industry conservation project in Colombia
  - \$13MM to be invested over 5 years
  - Will sequester 8.7 million tonnes of CO<sub>2</sub> over the project's lifetime
- 222,986 trees planted as a result of GTE's environmental projects
- Voluntary projects underway to convert natural gas to electricity for our operations; designed to reduce emissions by 9,000 tonnes of CO<sub>2</sub> per year and reduce the load on the national power generation grid



## Social

- +90,000 people benefit from GTE's voluntary social investments<sup>2</sup>
- **Emprender Paga**<sup>3</sup> project strengthens +300 local businesses & entrepreneurs
- **Agroemprende Cacao**<sup>3</sup> project benefits 400 farmers by creating and expanding local markets
- 3,000 students & 36 schools participate in **PetroCopa**<sup>4</sup> program which teaches how water and oil can co-exist



## Governance

- GTE received a top rating of 1 for Governance from ISS, which includes shareholder rights, board structure, audit & risk oversight

*"Our **Beyond Compliance Policy** means that, wherever there are significant opportunities and benefits to the environment or communities, Gran Tierra voluntarily goes beyond what is legally required to protect the environment and provide social benefits because it is the right thing to do."*

– Gary Guidry, President & CEO

**GTE goes "Beyond Compliance" with investments & operating practices that are responsible, meaningful & sustainable**

# GRAN TIERRA SNAPSHOT

Independent international exploration & production company focused in Colombia & Ecuador, attractive investment destinations

## Production

	2016	2017	2018	9M2019
WI Production (boepd) <sup>1</sup>	26,216	31,426	36,209	35,454

## Financials

	2016	2017	2018	9M2019
Adjusted EBITDA (US \$MM) <sup>2</sup>	120	182	376	260
Funds Flow from Operations (US \$MM) <sup>2</sup>	105	220	306	223

## 2018 Reserves<sup>3</sup>

	1P	2P	3P
MMBOE	70	150	215
RLI (years) <sup>4</sup>	5	11	15
NPV <sub>10</sub> BT (US \$bn)	\$1.4	\$2.8	\$4.0
NPV <sub>10</sub> AT (US \$bn)	\$1.2	\$2.2	\$3.0
Mean Prospective Resources <sup>5</sup>		Risked	Unrisked
MMBOE		361	1,419

## Market Values

Market Capitalization (December 6, 2019)	US\$ 0.36 bn
Net Debt <sup>6</sup>	US\$ 0.64 bn
Enterprise Value	US\$ 1.01 bn
Avg 30-day combined trading volume	3.8 MM shares

NYSE AMEX:  
LSE:  
TSX:

GTE

100%

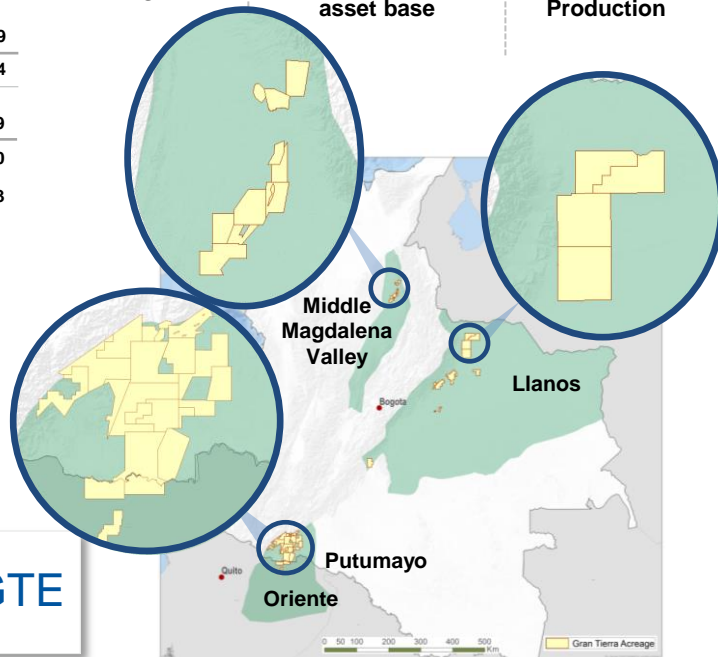
Oil

Diversified

High-quality,  
asset base

+95%

Operated  
Production



**High quality, diversified asset base: 100% oil & over 95% operated**



# GRAN TIERRA'S FOCUSED STRATEGY

*Targeting 3-5 x's growth in NAV/share in 5 years*

## STRATEGY

### Proven, Under-Explored Conventional Hydrocarbon Basins

World-class exploration program targeting WI Unrisked Mean Prospective Resources of 1.4 billion BOE<sup>1</sup>



### Access to Established Infrastructure

Large spare capacity in pipelines & trucking, leads to strong oil prices linked to Brent, short cycle times & quick access to world markets



### Strong, Stable Economic Environment

Pro-Western governments that ensure contract sanctity, rule of law & encourage FDI and resource development



### Highly Competitive Fiscal Regime

Flexible, progressive fiscal regimes with sliding scale royalty or contractor take that are among the best in the world



**Colombia & Ecuador**  
an ideal fit  
for GTE

## TACTICS

### Apply Proven Technology

GTE has been able to reduce drilling times/costs by ~40%



### Maintain Strong Financial Position

Self-funded model, GTE expects to generate 2020 free cash flow<sup>2</sup> of \$60-80 MM after exploration program



### Maintain Flexibility & Control the Allocation of Capital

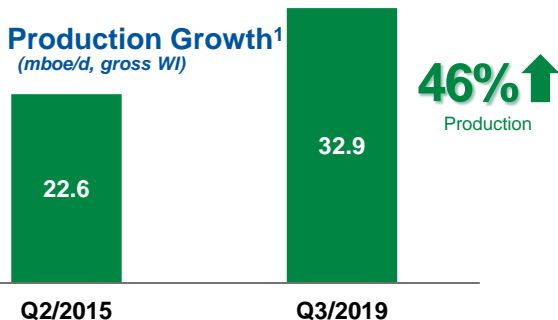
+95% operated asset base allows disciplined capital allocation, pace setting



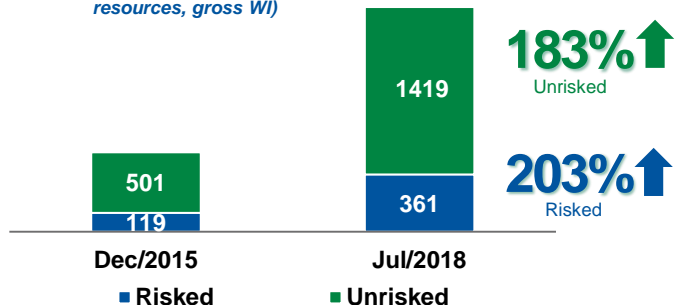
**Colombia & Ecuador are an excellent fit for Gran Tierra's strategy and tactical plan**

# DELIVERING ON OUR FOCUSED STRATEGY

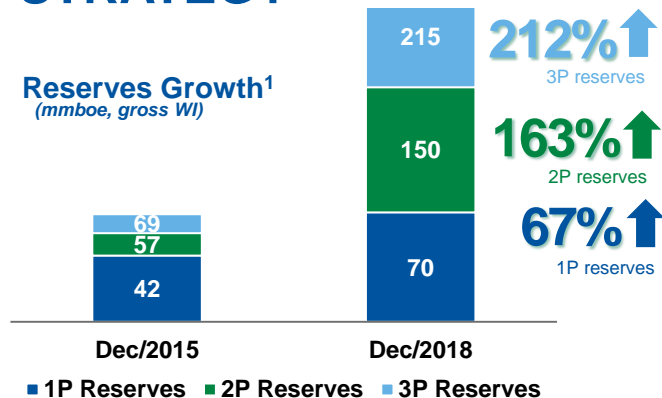
## Production Growth<sup>1</sup> (mboe/d, gross WJ)



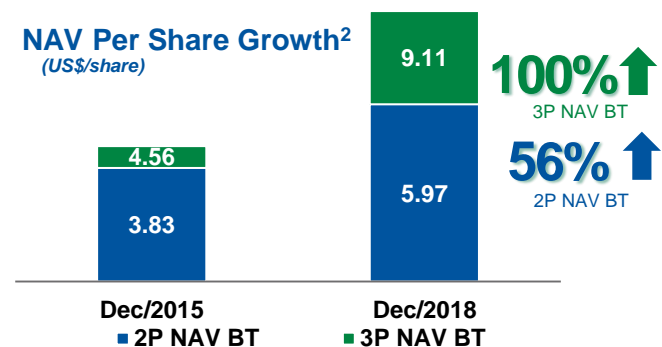
## Expanded Exploration Potential<sup>1</sup> (mmbae, mean prospective resources, gross WJ)



## Reserves Growth<sup>1</sup> (mmbae, gross WJ)



## NAV Per Share Growth<sup>2</sup> (US\$/share)



**Growth in Colombian reserves/production/exploration potential = shareholder value creation**



# FREE CASH FLOW DRIVERS IN 2020 & BEYOND

## Key Investments For Future Free Cash Flow

2017-2019

### Significant Investments in Major Capital & Development Projects

- **Acordionero**
  - 7 pads constructed
  - 36 oil producers, 4 water source wells, 10 water injectors, 2 gas injectors
  - Constructed 40,000 bwpd Central Processing Facility
  - Increased gas-to-power capacity to 20 MW
  - Water injection & treatment capacity increased to 40,000 bfpd
- **Costayaco**: expanded fluid handling & gas-to-power
- **Suroriente**: expanded water injection
- **Putumayo 3D Seismic**: 340 km<sup>2</sup> seismic survey

2020 & Beyond

### Significant Free Cash Flow Available

- Gran Tierra is focused on generating **free cash flow**; targeting 2020 free cash flow of **\$110-\$130MM** before discretionary exploration, **\$60-\$80 MM** after exploration
- Return **free cash flow** to stakeholders through buybacks and net debt reduction
- Deliver **top quartile netbacks**
- **Drill 3-10 exploration wells** targeting GTE's world class prospective resource base

Significant investments build the foundation for free cash flow in 2020 & beyond

# 2020 GUIDANCE<sup>1</sup> – SIGNIFICANT FREE CASH FLOW

## Key Assumptions

<b>WI Production (boepd)</b>	<b>35,500 – 37,500</b>
<b>Total Capital (\$MM)</b>	<b>\$200-220</b>
Brent – Base Case (\$/bbl)	\$60
Brent – High Case (\$/bbl)	\$65

## Financial Guidance

	Base Case	High Case
Operating Netback <sup>2</sup> (\$MM)	\$360-380	\$410-430
EBITDA <sup>2</sup> (\$MM)	\$330-350	\$380-400
Cash Flow <sup>3</sup> (\$MM)	\$270-290	\$310-330
<b>Free Cash Flow<sup>4</sup> (\$MM)</b>	<b>\$60-80</b>	<b>\$100-120</b>

## Expense & Operating Netback Guidance

	Base Case	High Case
Transportation & Quality Discount	\$11.00 - \$12.00	\$11.00 - \$12.00
Royalties	\$8.00 - \$9.00	\$9.50 - \$10.50
<b>Oil and Gas Sales Price (\$/boe)</b>	<b>\$39.00 - \$41.00</b>	<b>\$42.50 - \$44.50</b>
Operating Costs	\$8.00 - \$9.00	\$8.00 - \$9.00
Workover Costs	\$2.00 - \$2.50	\$2.00 - \$2.50
Transportation Costs (Pipeline)	\$1.00 - \$1.50	\$1.00 - \$1.50
<b>Operating Netback<sup>2</sup></b>	<b>\$27.00 - \$29.00</b>	<b>\$30.50 - \$32.50</b>
General and Administrative	\$2.25 - \$2.75	\$2.25 - \$2.75
Interest and Financing	\$3.25 - \$3.75	\$3.25 - \$3.75
Taxes	\$0.40 - \$0.50	\$1.40 - \$1.60

**2020 free cash flow of \$110-\$130MM before discretionary exploration, \$60-\$80 MM after exploration**

1. See Gran Tierra press release dated December 10, 2019 for more details and disclaimers

2. Operating netback and earnings before interest, taxes and depletion, depreciation and accretion ("EBITDA") are non-GAAP measures. Refer to "Non-GAAP Measures" in the guidance press release dated December 10, 2019.

3. "Cash flow" refers to the GAAP line item "net cash provided by operating activities". "Cash flow per share" refers to the GAAP line item "net cash provided by operating activities" divided by the common stock outstanding as of September 30, 2019 of 366,982,000 shares.

4. "Free cash flow" is a non-GAAP measure and does not have a standardized meaning under generally accepted accounting principles in the United States of America ("GAAP"). Free cash flow is defined as "net cash provided by operating activities" less projected 2020 capital spending. Refer to "Non-GAAP Measures" in GTE's December 10, 2019 press release.

# 2020 CAPITAL PROGRAM DETAILS

**75%**

**Development Capital**  
**\$150-170MM**

## **Acordionero**

13 development wells

Well tie-ins; flowlines; additional cellars

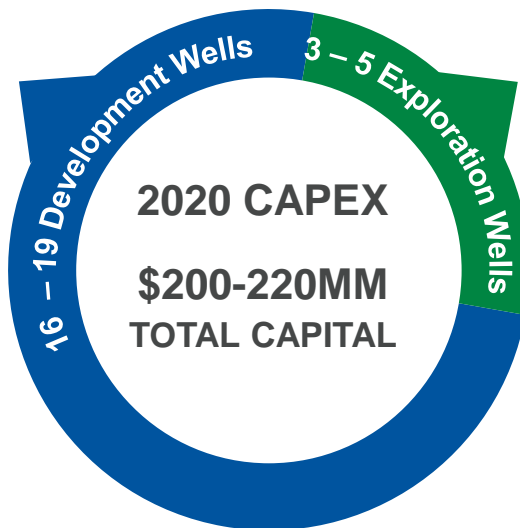
## **Costayaco**

3 development wells

## **Suroriente**

2 development wells

Facility expansion



**25%**

**Exploration Capital**  
**\$40-60MM**

## **MMV Basin**

0-1 exploration wells

## **Putumayo Basin**

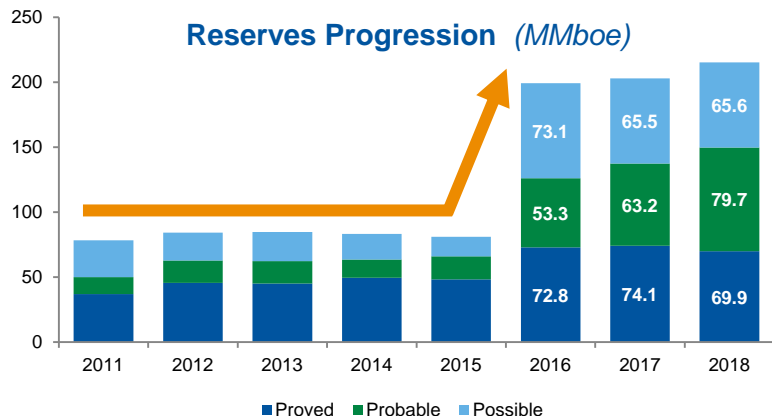
2 exploration wells

## **Ecuador**

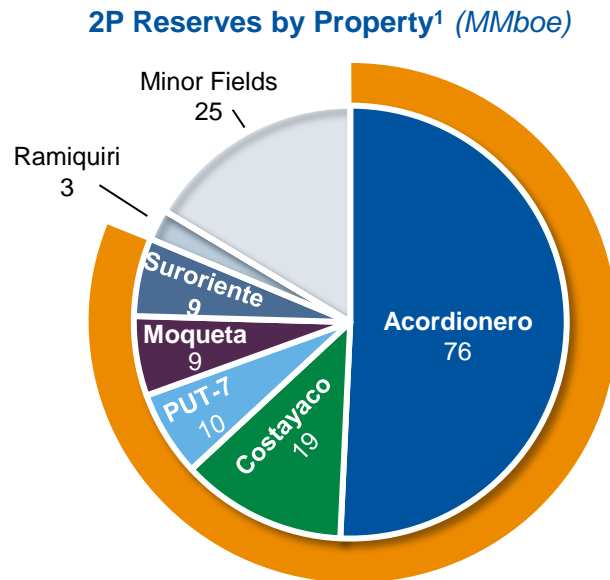
1-2 exploration wells

**GTE's 2020 capital program is expected to be fully funded by cash flow**

# SIGNIFICANT RESERVES GROWTH



- Achieved reserve replacement<sup>2</sup> **195%** (2P) and **196%** (3P) with total 2018 reserve additions of 25.8 MMboe (2P) and 25.9 MMboe (3P)
- Increased Acordionero 2P reserves by **12.5MMbbl**



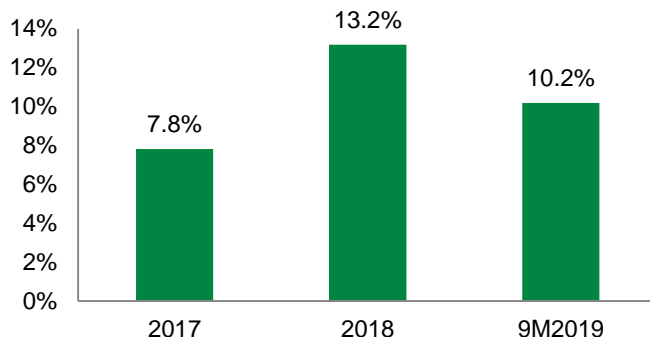
Acordionero, Costayaco, Moqueta, PUT-7 & Surorienté represent **81%** of the asset portfolio

**After a very active year, GTE achieved significant 2P & 3P reserve growth**

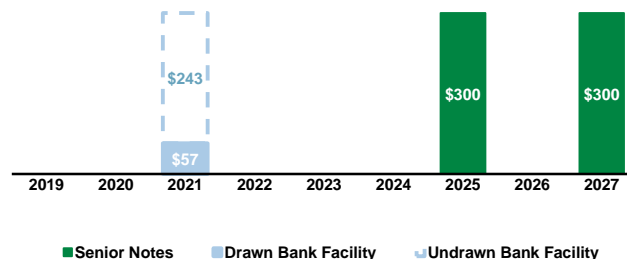
# DEPLOYING CAPITAL PROFITABLY

- GTE already generates high return on average capital employed ("ROACE")<sup>1</sup>, **over 13%** in 2018
- GTE ROACE expected to trend toward long-term internal rate of return target of **20%+**

ROACE (%)



## No Near-Term Maturities

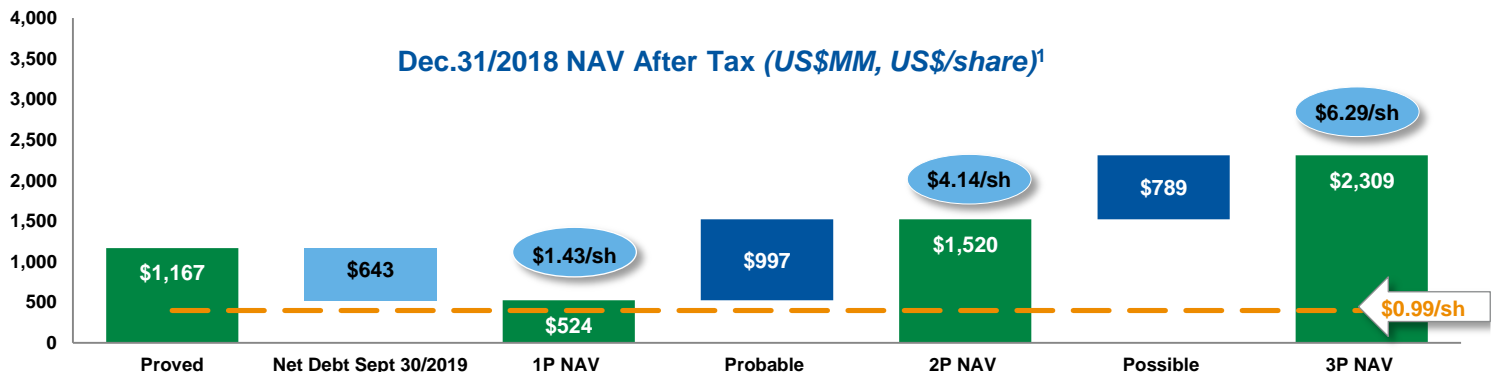
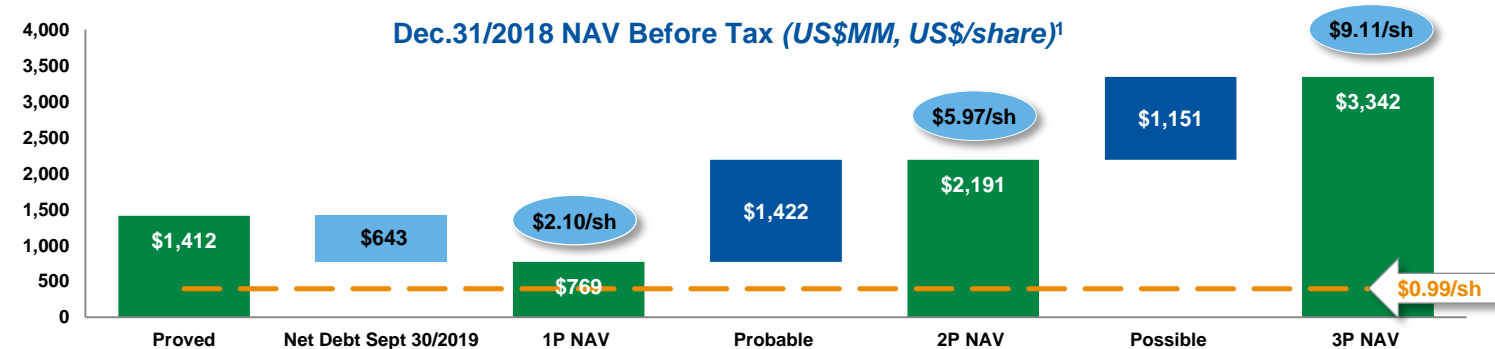


- At Q3/2019, net debt<sup>2</sup> to Adjusted EBITDA<sup>3</sup> was 1.8 times on a trailing 12 month basis (on a trailing 12 month basis, Adjusted EBITDA<sup>3</sup> was \$340 million); at \$60 Brent, GTE expects to generate free cash flow<sup>2</sup> in Q4/2019 & 2020, and decrease net debt to Adjusted EBITDA<sup>3</sup> below 1.5 times

**Gran Tierra is focused on growing value, not just growing barrels**

# NET ASSET VALUE

Dec 6/2019 Share Price  
\$0.99/share (USD)



**Gran Tierra shares currently trade at a significant discount; 0.2x 2P NAVAT per share**

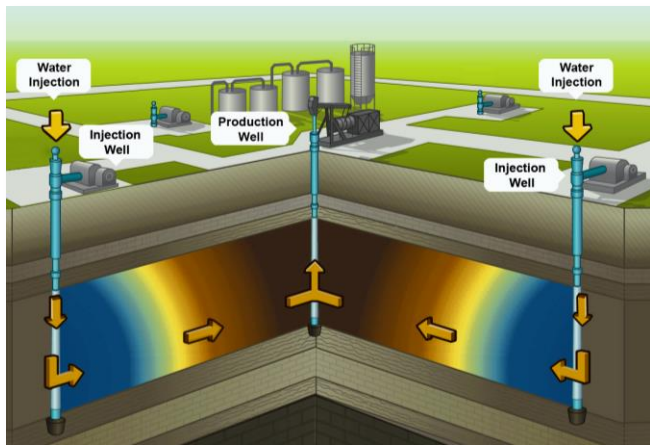


# WATERFLOODING – IMPROVED OIL RECOVERY

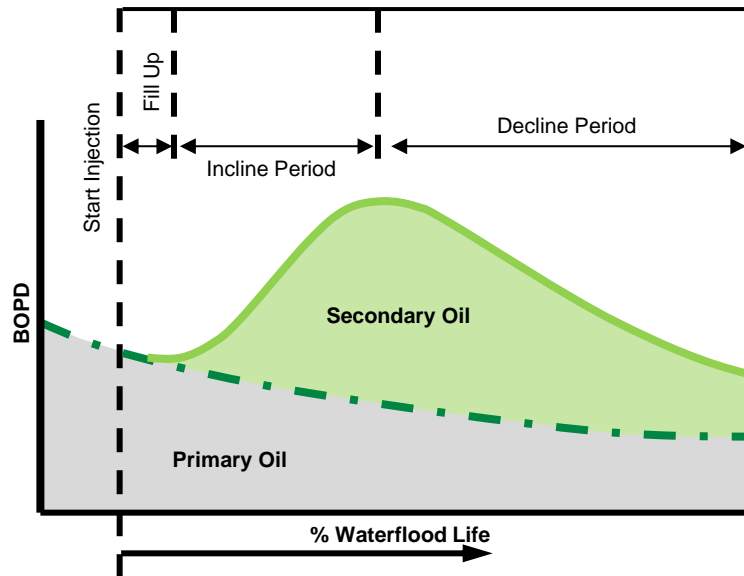
- Improves recovery by:
  - Sweeping oil towards producing wells
  - Maintaining/increasing reservoir pressure
  - Displacing oil from porous formations

## Waterflood Oil Recovery Process Schematic<sup>1</sup>

*Increased pressure helps push oil to producing wells*



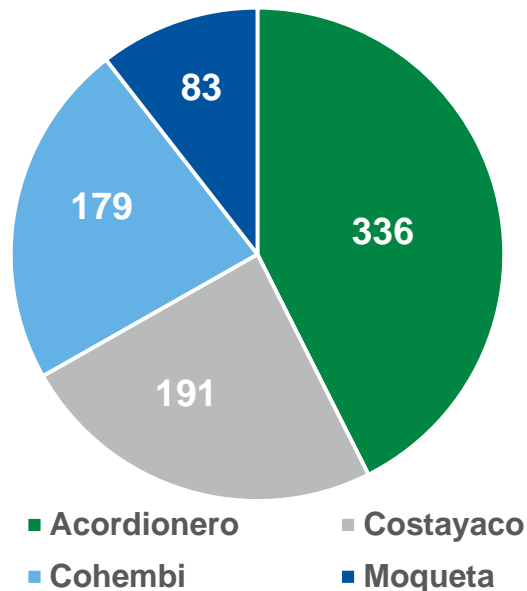
*Typical Waterfloods Significantly Increase Production, Recovery Factors & Reserves<sup>2</sup>*



**Waterflooding is a technique that can typically double oil production and ultimate recovery<sup>3</sup>**

# WATERFLOOD PORTFOLIO AND IMPACT

## 2P Original Oil-In-Place (MMbbls)



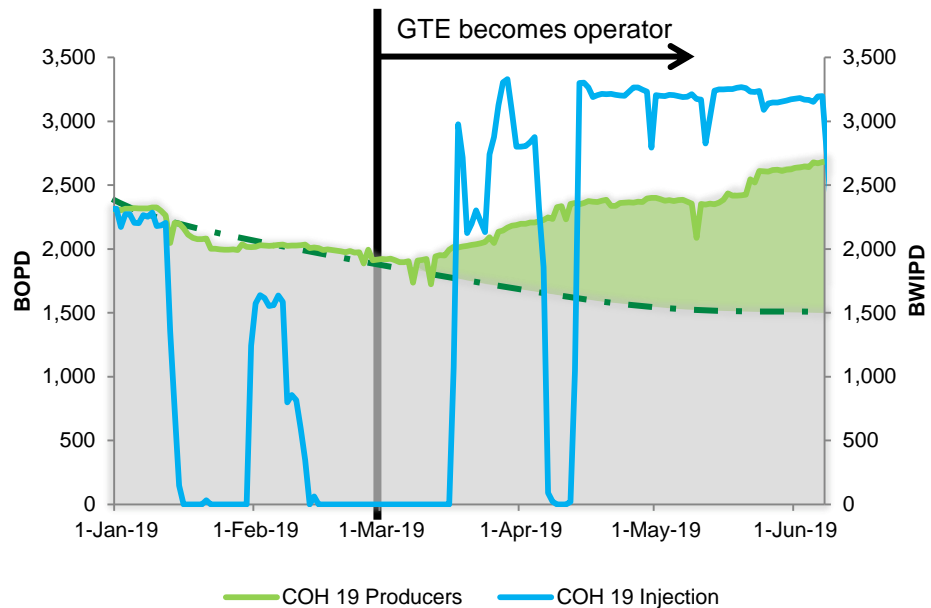
~800 MMbbls<sup>1</sup>

*Original Oil-In-Place (OOIP) under waterflood in GTE's 4 biggest oil fields*

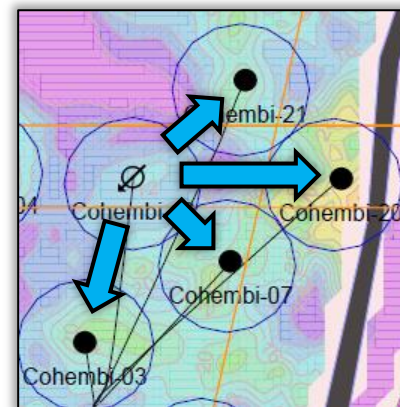
- Primary recovery factors typically do not exceed 20% of OOIP - waterflooding generally adds an **incremental recovery** of **15% to 25%**<sup>2</sup>
- Each **incremental 1%** of recovery factor that GTE achieves could add approximately **8 MMbbls** of gross additional recovery vs. GTE YE18 1P/2P reserves of 70/150 MMBOE
- Over the last 8 months, GTE has increased water injection by 36% to 110,000 BWIPD

**GTE's objective is to optimize these 4 major waterfloods to increase recovery factors**

# COHEMBI 19 WELL – WATERFLOOD IMPACT EXAMPLE



*Map of Cohembi Waterflood*



**Cohembi field exhibits immediate waterflood response in offsetting producers**

# ACORDIONERO – ASSET OVERVIEW

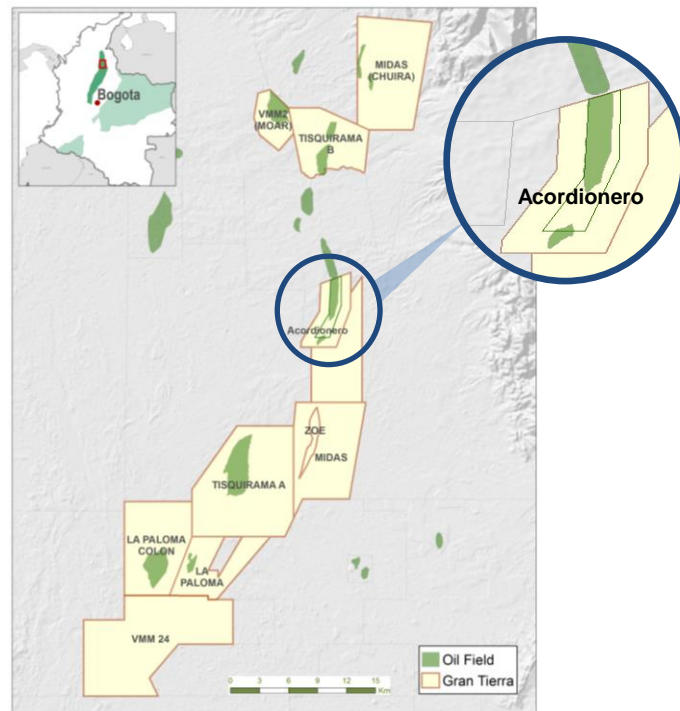
## ASSET DETAILS

- 100% WI Gran Tierra
- Generating free cash flow since date of acquisition
- 2019 drilling program includes 17 wells
- Fault-bounded to the east / south
- West dipping steep monocline
- Producing Zones: Lisama-A, Lisama-C, Lisama-E

Category	YE 2018 <sup>1</sup> (MMbbl)	YE 2018 NPV10 BT <sup>1</sup> (\$MM)
1P	32	840
2P	76	1,704
3P	97	2,110

**76 MMBOE<sup>1</sup>**  
2P WI Reserves

**97 MMBOE<sup>1</sup>**  
3P WI Reserves



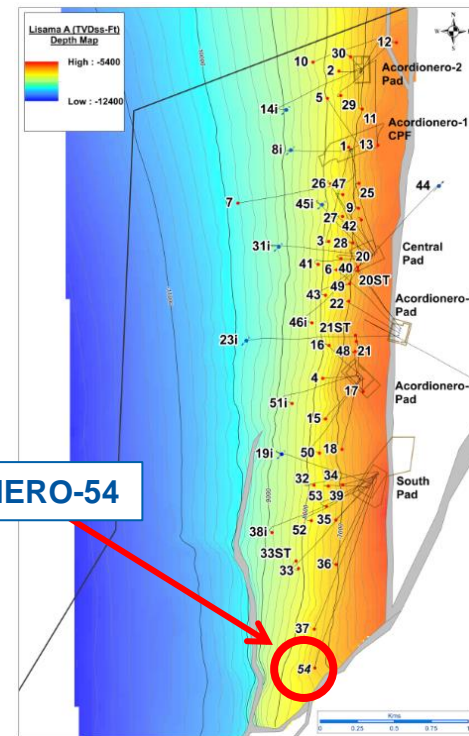
**Production has more than quadrupled since acquisition, while generating free cash flow**

# AC-54 – EXPANSION OF THE ACORDIONERO FIELD

## FURTHER DETAILS

- AC-54: this development well is the southernmost well drilled in the Acordionero field to date and encountered 348 feet measured depth of net pay and was completed in the Lisama A and C reservoirs
- During November 20 - December 6, 2019, AC-54 produced at average stabilized rates of 488 bopd of 17°API oil and a watercut of 0% on ESP
- This well is located outside the previously established southern boundary of the original-oil-place mapping for the field
- GTE is encouraged that Acordionero's production has returned to a growth track and the Company expects incremental reserve additions associated with the waterflood response and the AC-54 well results

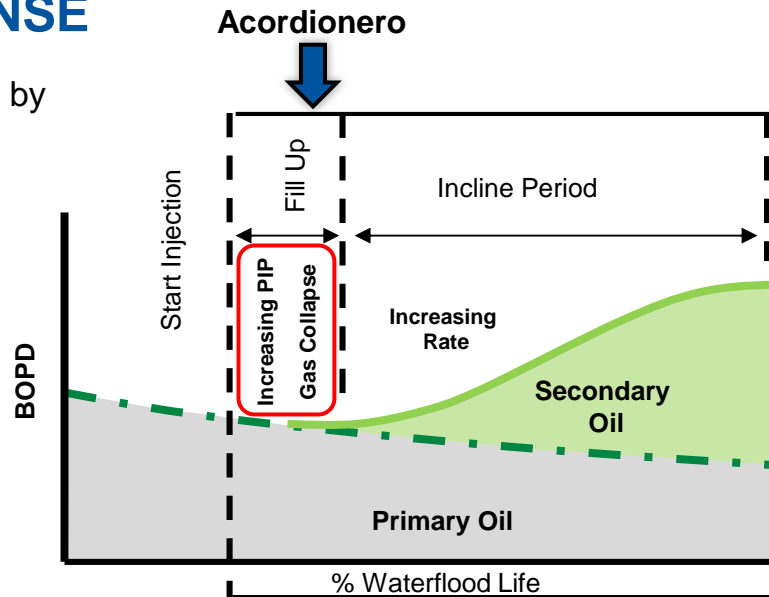
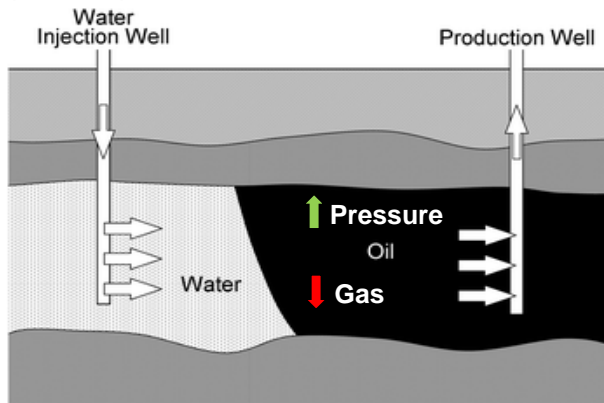
**ACORDIONERO-54**



**Encouraging preliminary results from AC-54 – drilled outside of 2P & 3P OOIP mapping**

# EARLY WATERFLOOD RESPONSE

- Early waterflood response can be evaluated by observing several variables in offsetting production wells, e.g. pressure, gas-oil ratio (“GOR”)



1. Pressure Response



2. Gas Collapse



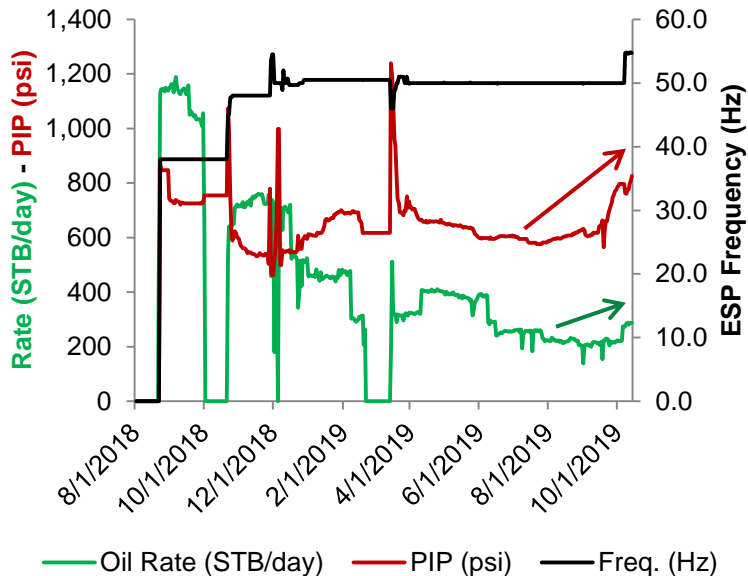
3. Increased Rate

Acordionero's early waterflood response is visible first in pressure increases & GOR reductions



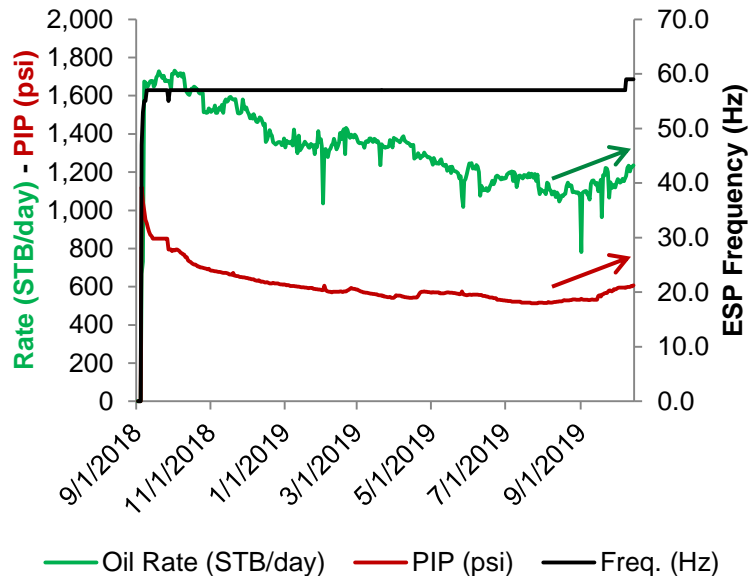
# PIP<sup>1</sup> INCREASES & PRODUCTION GAINS

Acordionero-26



**200-psi** increase in PIP, production still increasing

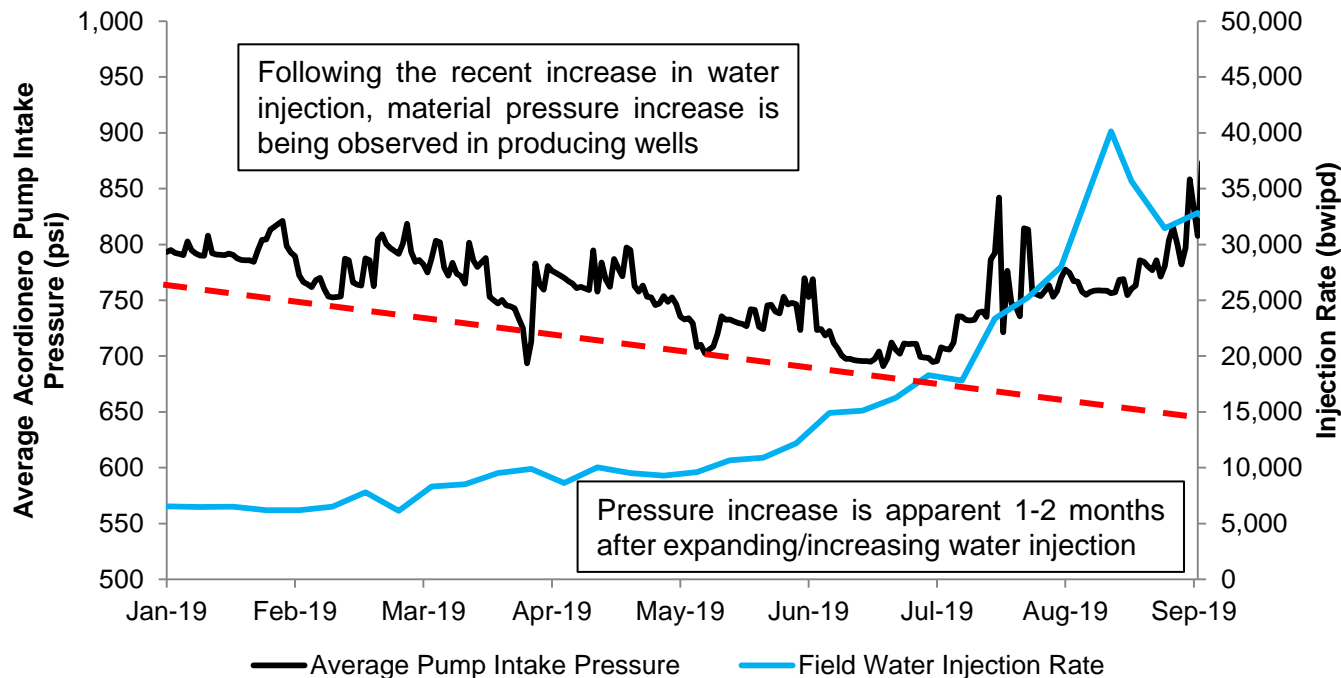
Acordionero-27



**50-psi** increase in PIP, production still increasing

**Acordionero: waterflood response is evident in pump intake pressure (PIP) and oil rate increases in wells**

# AVERAGE ACORDIONERO WELL WATERFLOOD RESPONSE



**Pump Intake Pressures (PIP) in wells are increasing in response to increased water injection**

# ACORDIONERO – SIGNIFICANT FACILITY EXPANSION

2016



Today



Major capital investments complete, Acordionero continues to generate free cash flow

# ACORDIONERO – FURTHER DETAIL

Overview	<ul style="list-style-type: none"> <li>100% working interest (operator)</li> <li>High netback ~19° API oil</li> <li>Stacked pay:                             <ul style="list-style-type: none"> <li>Thick (~330'), permeable (200-1,300mD) oil pay in Lisama A&amp;C</li> <li>New discoveries in Lisama D (AC-8i &amp; Mochuelo)</li> </ul> </li> <li>Field currently powered by diesel and natural gas; will shift entirely to natural gas in 2019</li> </ul>
Development Plan	<ul style="list-style-type: none"> <li>Waterflood commenced in Q4 2017</li> <li>Full 2P development: 54 oil wells; 10 water injectors<sup>1</sup></li> </ul>
Potential Upside	<ul style="list-style-type: none"> <li>Conversion of 3P and 2P reserves to 1P</li> <li>Successful waterflood could increase reserves materially</li> </ul>

NI 51-101		2017 YE		2018 YE		Change	
		A Sand	C Sand	A Sand	C Sand	A Sand	C Sand
1P	OOIP (MMbbl)	224	55	250	62	+26	+7
	RF (%)	13	23	13	28	NC	+5
2P	OOIP (MMbbl)	263	69	263	69	NC	NC
	RF (%)	24	28	27	35	+3	+7
3P	OOIP (MMbbl)	302	83	276	72	-26	-11
	RF (%)	30	35	33	40	+3	+5

**Full waterflood implementation expected to begin increasing 1P recovery factors up to 2P-3P levels over time**

# AYOMBERO – ASSET OVERVIEW

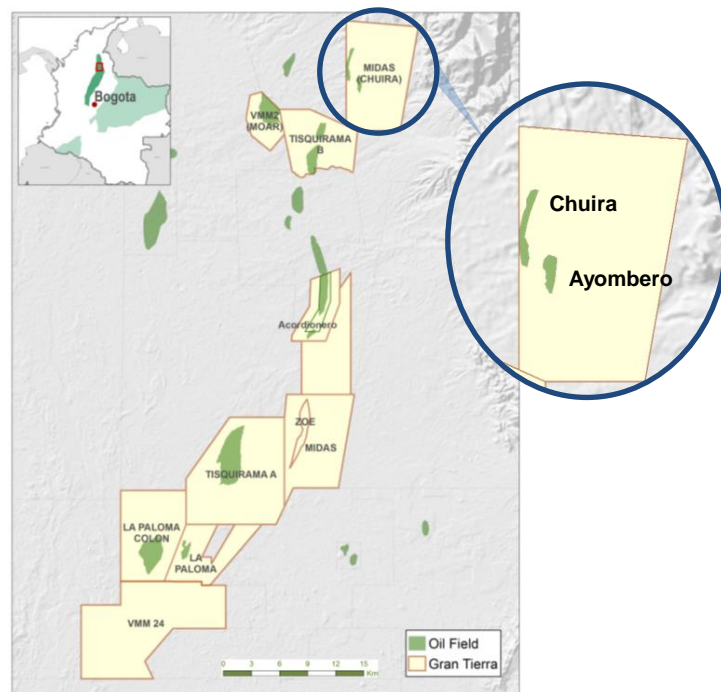
## ASSET DETAILS

- 100% WI Gran Tierra
- Highly-fractured, conventional carbonate
- Significant potential in 3 horizons
- Unrisked Prospective Resources<sup>1</sup>:  
21 MMBOE (P90) & 119 MMBOE (P10)
- Producing Zones: Galembo

Category	YE 2018 <sup>2</sup> (MMbbl)	YE 2018 <sup>2</sup> NPV10 BT (\$MM)
1P	2	22
2P	5	67
3P	8	118

**4.6 MMBOE<sup>2</sup>**  
2P WI Reserves

**~64 MMBOE**  
Estimated Unrisked Mean  
Prospective Resource<sup>1</sup>



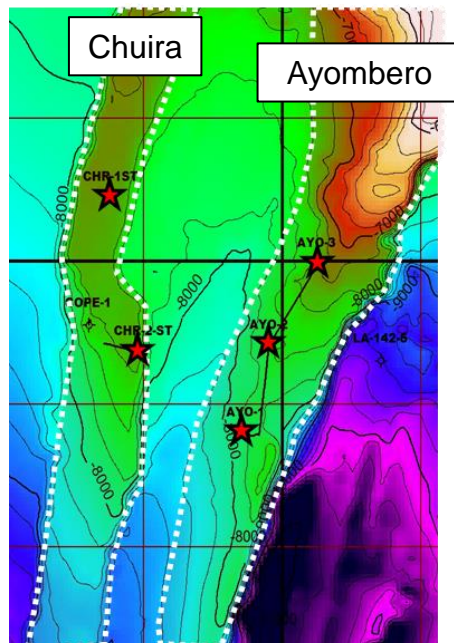
**Complex reservoir, significant upside to be appraised**

# AYOMBERO – FIELD OVERVIEW

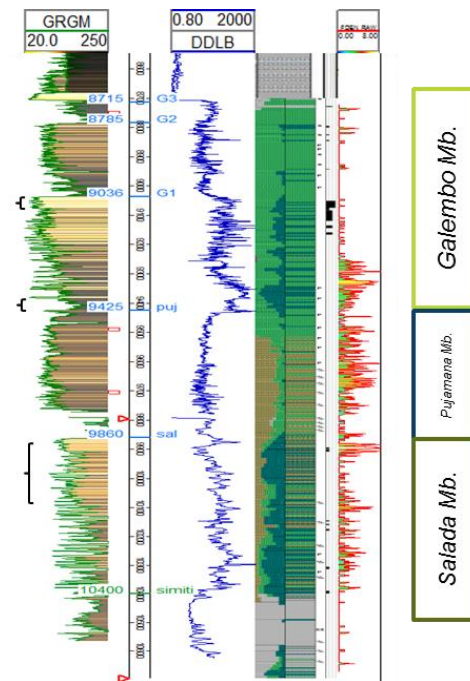
## Significant Upside

- 3 wells drilled to date: similar lithologies, oil saturations & over-pressure in Galembo Member of La Luna Carbonate reservoir, indicating reservoir & structural continuity
- 600-700 ft gross reservoir, ~13% matrix porosity, natural fracturing, permeability up to 200 md, significant over-pressure w/gradient = 0.88 psi/ft
- Large potential oil-in-place = 321 MMBOE, could yield Pmean Unrisked Prospective Resources = 64 MMBOE
- Analogous to La Paz oil field in Venezuela (>1.0 BBOE recovered to date)
- Significant prospective resource size could represent upside potential to increase GTE's total 2P reserves by 43%**

## La Luna Depth Map



## Ayombero-1 Logs



Ongoing appraisal/development of Ayombero/Chuirra structure planned to unlock significant resources



# AYOMBERO – COMPLEX, BUT SIGNIFICANT UPSIDE

## Reservoir Challenges

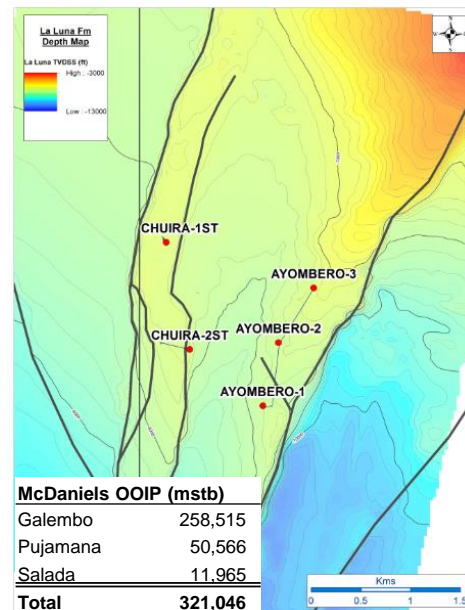
- Highly over-pressured formations have proved challenging in terms of drilling & completion operations
- Umir formation above target zone has proved difficult to drill and case
- The Company's estimates of oil in place and prospective resources are unchanged by these short-term issues

## Next Steps

- Applying knowledge from similar, challenging reservoirs which are exploited successfully elsewhere in the world
- Geomechanical study addressing appropriate Umir formation drilling techniques
- Ayombero-1 continues to produce (on natural flow) >220 bopd and with no water production
- A snubbing unit has been imported to retrieve parted coil tubing in both the Ayombero-2 & 3 wells in order to continue with completion operations

***GTE is excited about the potential of Ayombero-Chuira La Luna conventional carbonate resource play, its substantial prospective resource base & inventory of future potential drilling opportunities***

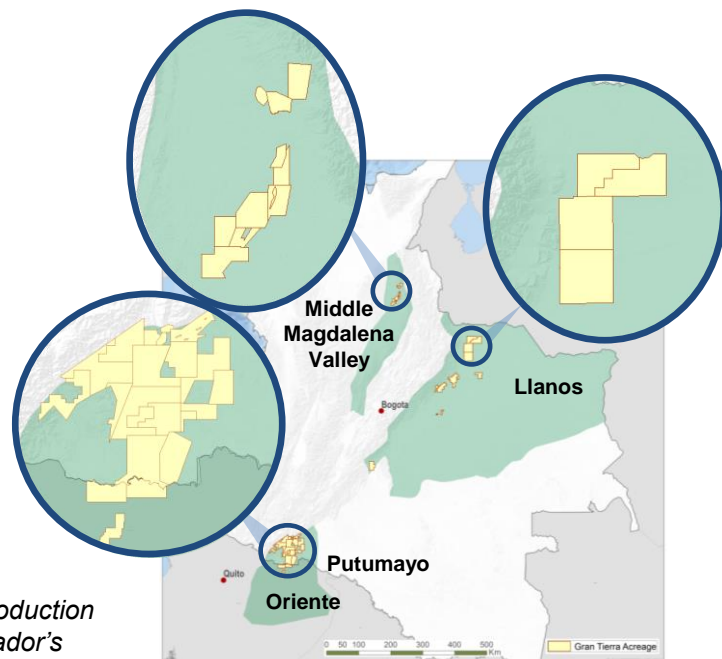
## Potential Oil-In-Place Map



**Over-pressured, naturally fractured conventional carbonate: both challenges and opportunities**

# COLOMBIA & ECUADOR: WORLD CLASS OIL POTENTIAL

Basin <sup>1</sup>	Total Basin			GTE
	Cumulative Production (Bn bbls)	Proved Oil Reserves (Bn bbls)	2018 Oil Production (Kbbls/day)	Net Land Position (MM acres)
Middle Magdalena Valley	2.7	0.4	147	0.1
Llanos	6.7	1.3	586	0.8
Putumayo	0.6	0.1	36	1.1
TOTAL COLOMBIA <sup>2</sup>	10.3	2.0	866	2.2
Oriente (ECUADOR)	6.1	2.8	517	0.1



**>16** billion bbls

*Colombia & Ecuador combined oil production over last 100 years*

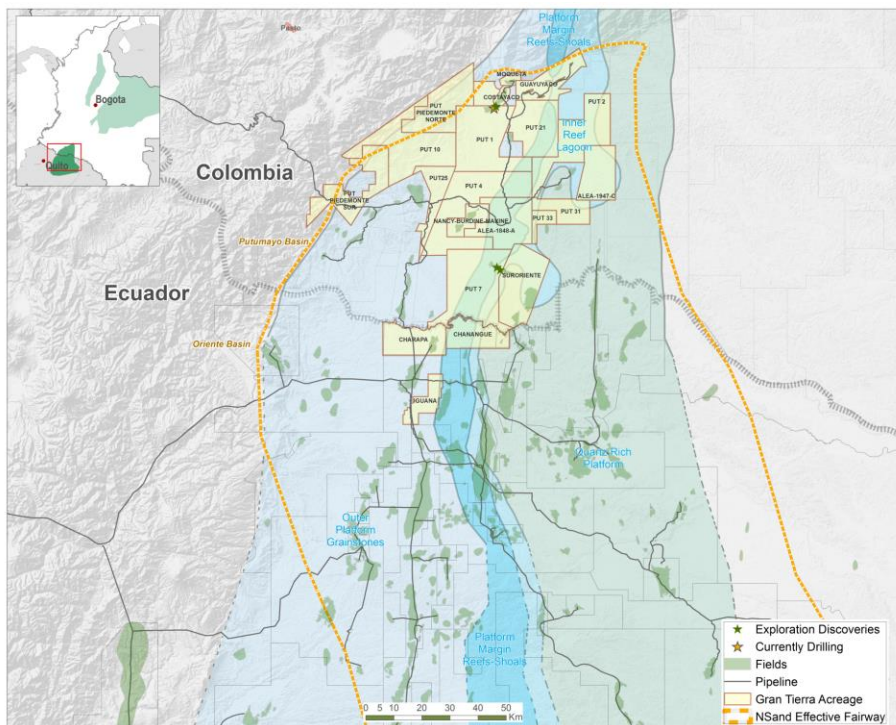
**+47%**

*Increase in Colombia's oil production over last 10 years while Ecuador's has remained flat*

**Gran Tierra holds 2.3 million net acres across 4 prolific, high potential oil basins in Colombia & Ecuador**

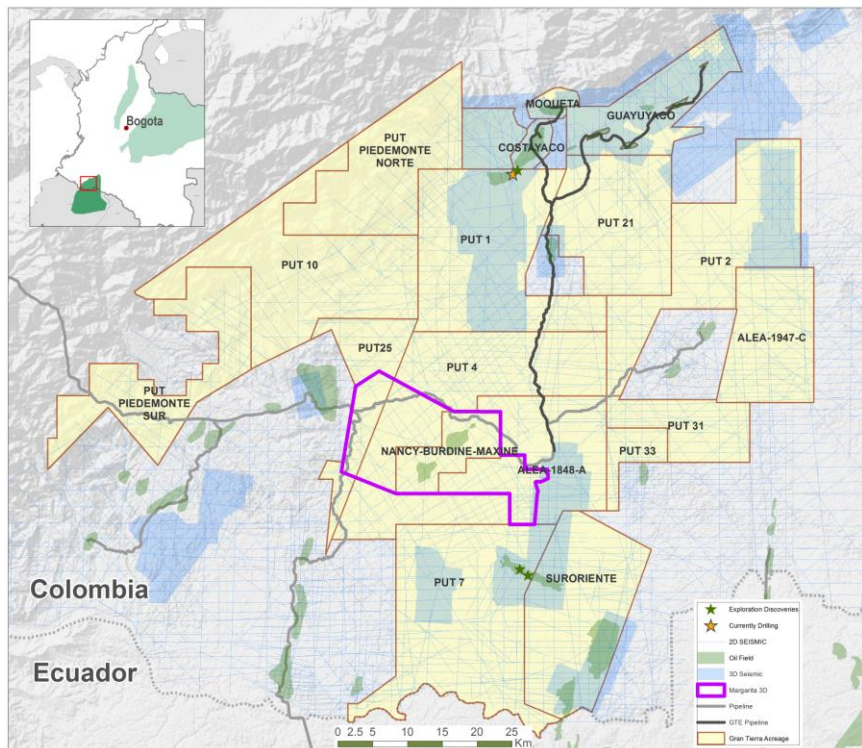
# PUTUMAYO & ORIENTE - UNDEREXPLORED, PROVEN BASINS

- Colombia's Putumayo basin is underexplored due to past above-ground security issues, now mitigated by Peace Agreement
- Same geology as Ecuador, where almost 6 billion bbls of oil produced<sup>1</sup>
- Highly prospective geological trends in Ecuador extend into Putumayo
- In the Putumayo Basin, GTE is the largest landholder (1.2 MM gross/1.1MM net acres), operates 17 of 17 blocks & has substantial seismic data base covering much of basin
- In the Oriente Basin, GTE has been officially awarded 3 blocks (100% WI) in Ecuador (140,000 gross acres)
  - Committed to drill 14 wells over the next 4 years, across the three blocks
  - Exploration drilling scheduled to commence in 2020

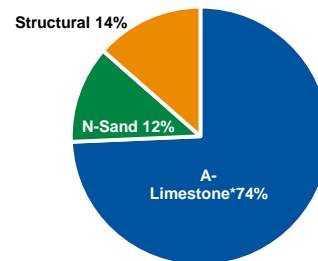


**GTE has built a dominant position across the proven & high-potential Putumayo & Oriente Basins**

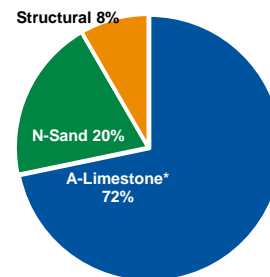
# PUTUMAYO BASIN SIZE OF THE PRIZE



**Total Putumayo – Unrisked Mean Prospective Resources (1,106 MMBOE)<sup>1</sup>**



**Total Putumayo – Risked Mean Prospective Resources (298 MMBOE)<sup>1</sup>**



**Dominant land position, large exploration upside, tot. unrisked mean prospective resources = 1,106 MMBOE**





# Appendix

# BOARD OF DIRECTORS

## Highly Experienced, Independent Board of Directors

### Gary Guidry



### Robert Hodgins, *Chairman*



### Peter Day



### Evan Hazell



### Ronald Royal



### Sondra Scott



### David Smith



### Brooke Wade



- Gran Tierra is committed to best corporate governance practices, which promote the long-term interests of our stakeholders
- Comprehensive governance policies outline specific board member requirements, compensation strategies, health and safety procedures, and anti-corruption controls
- All board committees are independent and have independent committee chairs

**GTE's board is committed to promoting the long term interests of its stakeholders**



# GRAN TIERRA – EXCELLENT VALUE PROPOSITION

## High-Quality Assets

- +95% operated, 100% oil
- Low decline rates
- Low operating costs
- Top quartile netbacks

## High-Impact Exploration

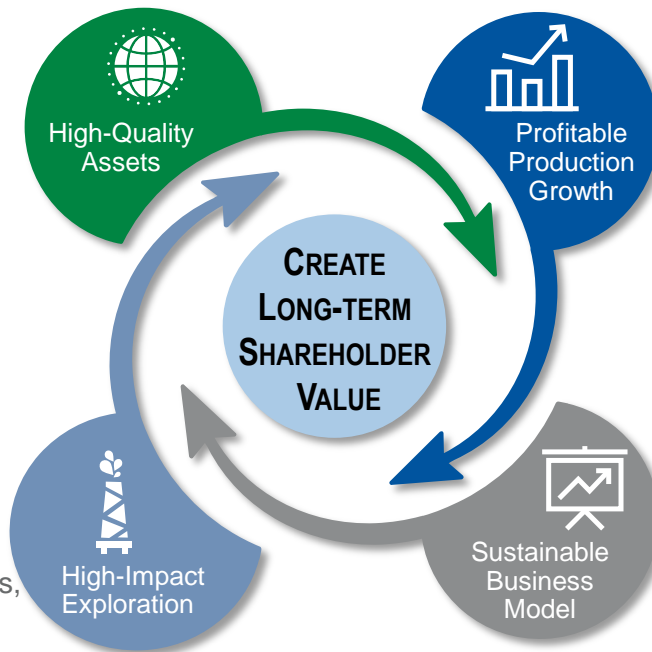
- Material, world-class prospective resource base
- Sizable prospect inventory
- Proved underexplored basins, with stacked horizons

## Profitable Production Growth

- Short cycle times
- Focused on full-cycle returns
- Large inventory of undeveloped well locations

## Sustainable Business Model

- Strong balance sheet
- Exploration & development programs funded through cash flow



**Key objective: grow NAV/share by 3-5 times within 5 years**

# CAPITAL ALLOCATION FRAMEWORK



## LEVERAGE DISCIPLINE

- Target net debt/EBITDA of  $<1.5x$
- Strong balance sheet protects against oil price volatility
- Fund organic capital program primarily through internally generated cash flows



## MAINTAIN FLEXIBILITY

- \$300MM committed bank facility, no near-term maturities
- Operatorship provides control of costs, including capex program
- Robust headroom allows pursuit of future opportunities



## INVESTMENT CRITERIA

- Apply investment target of minimum IRR of 20% (AT) to allocate capital across portfolio
- Invest in assets with short cycle times, low costs, and access to infrastructure



## SHAREHOLDER RETURNS

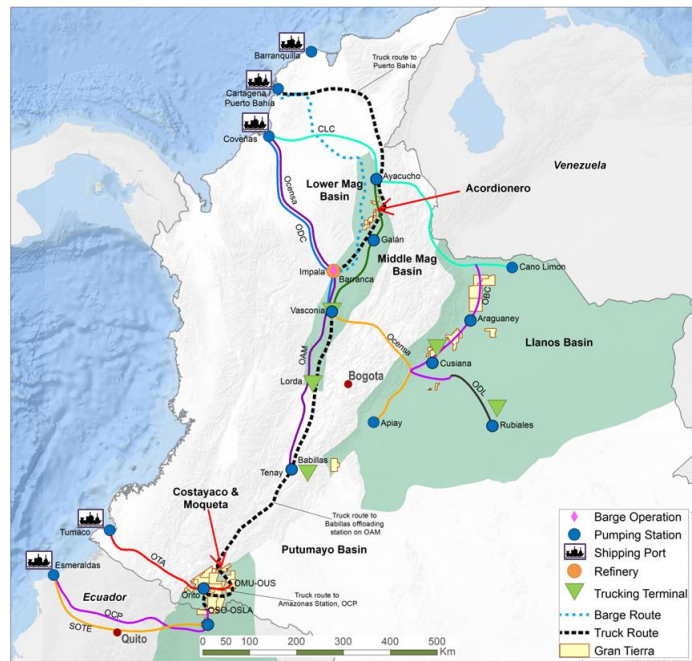
- Return free cash flow to shareholders via buybacks
- Consider additional returns during future periods of strong FCF

Gran Tierra's capital allocation framework is focused on creating long-term shareholder value

## ACCESS TO EXISTING TRANSPORTATION INFRASTRUCTURE

- Gran Tierra benefits from large spare capacity in pipelines & trucking throughout Colombia & Ecuador, which leads to:
  - Strong oil prices linked to Brent
  - Narrow oil price differentials
  - Short cycle times
  - Quick access to world markets through major export terminals

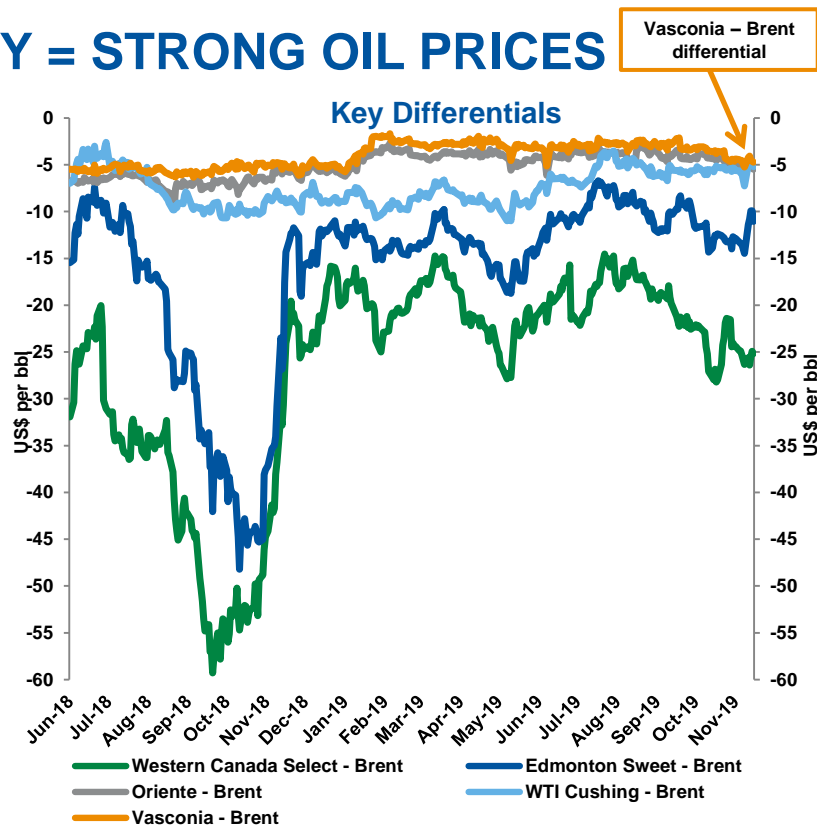
Transportation	Export Point
Truck + pipeline	Esmeraldas (Ecuador)
Pipeline	Tumaco (Colombia)
Truck or truck + pipeline	Coveñas (Colombia)
Truck or truck + barge	Puerto Bahía (Colombia)
Truck or truck + pipeline	Coveñas (Colombia)



## Gran Tierra benefits from significant oil takeaway capacity & no infrastructure bottlenecks

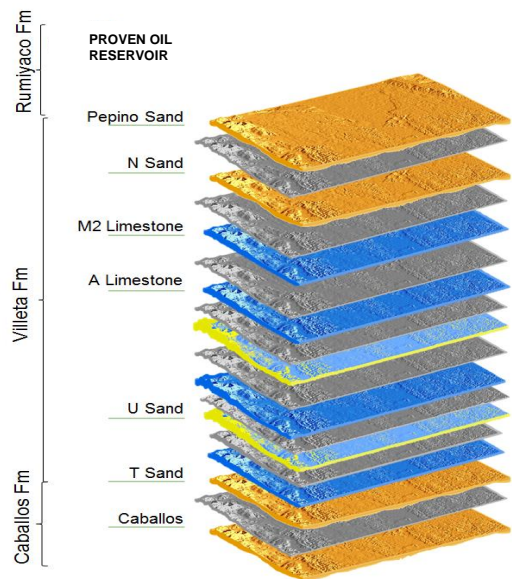
# LARGE TAKEAWAY CAPACITY = STRONG OIL PRICES


- Crude oil prices strong in Colombia & Ecuador with steady, narrow differentials, unlike in the US & Canada; current differentials to Brent:
  - Vasconia (Colombia) = -\$4.00/bbl
  - Oriente (Ecuador) = -\$5.00/bbl
  - WTI (US) = -\$10.00/bbl
  - Canada = -\$14.00-20.00/bbl
- GTE produces 100% oil; all crude sales contracts use Brent as the reference price
- Strong netbacks and balance sheet reduce need for long-term hedging



Crude oil prices strong in Colombia & Ecuador with steady, narrow differentials, unlike in US & Canada

# PUTUMAYO BASIN - GEOLOGY OVERVIEW



 **Limestone & Sandstone Reservoir**

 **Sandstone Reservoir**

 **Shale Seal**

 **Limestone Reservoir / Source**

Reservoir	Play Type	API (degrees)	Net Pay (ft)	Porosity (%)	Permeability (mD <sup>1</sup> )
N Sand	Stratigraphic	15-25	5-40	10-30	10-1000
M2 Limestone	Stratigraphic	25-35	10-100	3-10	Matrix + Fractures
A Limestone	Stratigraphic Conventional Resource	25-35	10-150	3-10	Matrix + Fractures
U Sand	Stratigraphic & Structural	15-30	10-80	10-25	10-1000
T Sand	Structural	20-30	10-80	10-25	10-1000
Caballos	Structural	20-30	20-100	15-30	10-1000

**The Putumayo Basin is underexplored, Gran Tierra is at the forefront**

# HEDGING SUMMARY

## Oil price 2019 hedges

Period and Type of Instrument	Volume (bopd)	Reference	Purchased Put (\$/bbl)	Sold Call (\$/bbl)
Collars: April 1, 2019 to December 31, 2019	5,000	Brent	\$60.00	\$71.50

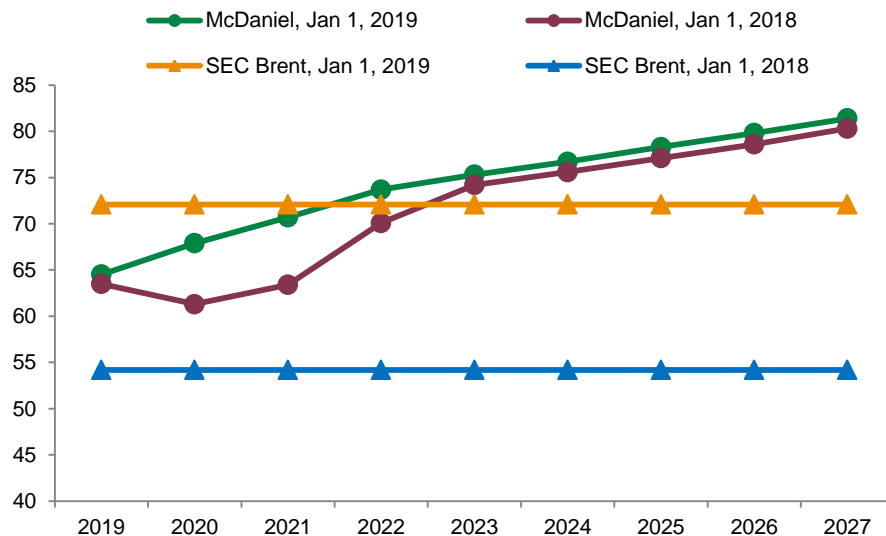
Period and Type of Instrument	Volume (bopd)	Reference	Purchased Put (\$/bbl)	Premium (\$/bbl)
Put: April 1, 2019 to December 31, 2019	5,000	Brent	\$60.00	\$2.38

## FX 2019 hedges

Period and Type of Instrument	Volume per month (Millions COP)	Reference	Weighted average floor (COP)	Weighted average cap (COP)
Collars: May 1, 2019 to December 31, 2019	22,500	USD/COP	3,019	3,446

# MCDANIEL 2018 & 2019 PRICE DECKS

Brent Comparison (US\$/bbl)



# NON-GAAP MEASURES

## EBITDA

EBITDA, as presented, is net loss adjusted for DD&A expenses, asset impairment, interest expense and income tax recovery or expense. Management uses this financial measure to analyze performance and income or loss generated by Gran Tierra's principal business activities prior to the consideration of how non-cash items affect that loss, and believes that this financial measure is also useful supplemental information for investors to analyze performance and the Company's financial results. A reconciliation from net loss to EBITDA is as follows:

	Three Months Ended September 30,		Nine Months Ended September 30,	
	2019	2018	2019	2018
<b>EBITDA - (Non-GAAP) Measure (\$000s)</b>				
Net (loss) income	\$ (28,833)	\$ 75,295	\$ 11,686	\$ 113,456
<b>Adjustments to reconcile net (loss) income to EBITDA and Adjusted EBITDA</b>				
DD&A expenses	49,812	51,630	164,430	137,698
Interest expense	12,153	7,404	30,655	20,274
Income tax expense (recovery)	11,521	(17,661)	45,675	36,106
<b>EBITDA</b>	<b>\$ 44,653</b>	<b>\$ 116,668</b>	<b>\$ 252,446</b>	<b>\$ 307,534</b>
Loss on redemption of convertible notes	11,305	—	11,305	—
Investment loss (gain)	11,972	(6,328)	(3,746)	(12,045)
<b>Adjusted EBITDA</b>	<b>\$ 67,930</b>	<b>\$ 110,340</b>	<b>\$ 260,005</b>	<b>\$ 295,489</b>



# NON-GAAP MEASURES

## Funds Flow from Operations

Funds flow from operations, as presented, is net cash provided by operating activities adjusted for net change in assets and liabilities from operating activities and cash settlement of asset retirement obligation. Management uses this financial measure to analyze liquidity and cash flows generated by Gran Tierra's principal business activities prior to the consideration of how changes in assets and liabilities from operating activities and cash settlement of asset retirement obligation affect those cash flows, and believes that this financial measure is also useful supplemental information for investors to analyze Gran Tierra's liquidity and financial results. A reconciliation from net cash provided by operating activities to funds flow from operations is as follows:

	Three Months Ended September 30,		Nine Months Ended September 30,	
	2019	2018	2019	2018
<b>Funds Flow From Operations - (Non-GAAP) Measure (\$000s)</b>				
Net (loss) income	\$ (28,833)	\$ 75,295	\$ 11,686	\$ 113,456
Adjustments to reconcile net (loss) income to funds flow from operations				
DD&A expenses	49,812	51,630	164,430	137,698
Deferred tax expense (recovery)	8,472	(36,769)	31,752	(118)
Stock-based compensation (recovery) expense	(8)	10,275	1,092	20,477
Amortization of debt issuance costs	789	816	2,574	2,329
Cash settlement of RSUs	—	—	—	(360)
Non-cash lease expense	472	—	1,366	—
Lease payments	(755)	—	(1,603)	—
Unrealized foreign exchange loss (gain)	6,412	(672)	5,303	159
Financial instruments loss (gain)	12,285	(4,874)	(2,890)	6,840
Cash settlement of financial instruments	(930)	(10,686)	(2,275)	(26,169)
<b>Funds flow from operations</b>	<b>\$ 59,021</b>	<b>\$ 85,015</b>	<b>\$ 222,740</b>	<b>\$ 254,312</b>

# PRESENTATION OF OIL & GAS INFORMATION

BOEs (Barrel of Oil Equivalent) may be misleading particularly if used in isolation. A BOE conversion ratio of 6 thousand cubic feet of gas to 1 barrel of oil is based on an energy equivalency conversion method primarily applicable at the burner tip and does not represent a value equivalency at the wellhead. In addition, given that the value ratio based on the current price of oil as compared with natural gas is significantly different from the energy equivalent of six to one, utilizing a BOE conversion ratio of 6Mcf:1bbl would be misleading as an indication of value. Unless otherwise specified, in this presentation, all production is reported on a working interest ("WI") basis (operating and non-operating) before the deduction of royalties payable. Per BOE amounts are based on WI sales before royalties. For per BOE amounts based on NAR production, see our Annual Report on Form 10-K filed February 27, 2018.

Well test results should be considered as preliminary and not necessarily indicative of long-term performance or of ultimate recovery. Well log interpretations indicating oil and gas accumulations are not necessarily indicative of future production or ultimate recovery. If it is indicated that a pressure transient analysis or well-test interpretation has not been carried out, any data disclosed in that respect should be considered preliminary until such analysis has been completed.

In this presentation:

- o **"reserves"** are estimated remaining quantities of oil and natural gas and related substances anticipated to be recoverable from known accumulations, as of a given date, based on: (a) analysis of drilling, geological, geophysical and engineering data; (b) use of established technology; and (c) specified economic conditions, which are generally accepted as being reasonable. Reserves are classified according to degree of certainty associated with estimates.
- o **"proved reserves"** or "1P" are those reserves that can be estimated with a high degree of certainty to be recoverable. It is likely that actual remaining quantities recovered will exceed estimated proved reserves;
- o **"proved developed reserves"** are those proved reserves that are expected to be recovered from existing wells and installed facilities or, if facilities have not been installed, that would involve a low expenditure (e.g., when compared to cost of drilling a well) to put reserves on production. Developed category may be subdivided into producing and non-producing;
- o **"proved undeveloped reserves"** or "PUD" are those proved reserves expected to be recovered from known accumulations where a significant expenditure (e.g., when compared to cost of drilling a well) is required to render them capable of production.
- o **"probable reserves"** or "2P" are those unproved reserves that are less certain to be recovered than proved reserves. It is equally likely that actual remaining quantities recovered will be greater or less than sum of estimated proved plus probable reserves. Probable reserves may be developed or undeveloped ("PPUD").
- o **"possible reserves"** or "3P" are those additional reserves that are less certain to be recovered than probable reserves. There is a 10% probability that quantities actually recovered will equal or exceed sum of proved plus probable plus possible reserves. Possible reserves may be developed or undeveloped ("PPPUD").
- o **"gross"** means: (a) in relation to the Company's interest in production or reserves, its "company gross" production or reserves, which represents the Company's working interest (operating or non-operating) share before deduction of royalties and without including any royalty interests of the Company; (b) in relation to wells, total number of wells in which the Company has an interest; and (c) in relation to properties, total area of properties in which the Company has an interest.
- o **"NAV"** means net asset value.
- o **"NPV"** means net present value.
- o **"prospective resources"** are quantities of petroleum estimated, as of a given date, to be potentially recoverable from undiscovered accumulations by application of future development projects. There is no certainty that any portion of the prospective resources will be discovered. If discovered, there is no certainty that it will be commercially viable to produce any portion of the prospective resources. Prospective resources have both an associated chance of discovery and a chance of development. Not all exploration projects will result in discoveries. Chance that an exploration project will result in discovery of petroleum is referred to as "chance of discovery." Thus, for an undiscovered accumulation, chance of commerciality is product of two risk components: chance of discovery and chance of development.
- o **"Net debt"** based on Q3 2019 net debt of \$643 million, comprised of cash of \$14 million, high yield bonds of \$600 million, and \$57 million drawn on the reserves-based credit facility. Debt at September 30, 2019, prepared in accordance with GAAP.

# PRESENTATION OF OIL & GAS INFORMATION

## Reserves and Prospective Resources Information

Unless otherwise noted, estimates of the Company's reserves, net present value of future net revenue attributable to Company's reserves and prospective resources relate solely to the Company's Colombia reserves and prospective resources and are based upon reports prepared by McDaniel & Associates Consultants ("McDaniel"), the Company's independent qualified reserves evaluator and auditor, in accordance with NI 51-101 – *Standards for Oil and Gas Activities* ("NI 51-101") and the Canadian Oil and Gas Evaluation Handbook ("COGEH"); in the case of reserves, dated December 31, 2018 (the "**McDaniel Reserve Report**"), and in the case of prospective resources, dated July 31, 2018 (the "**McDaniel Prospective Resource Report**"). Please see Gran Tierra's press release dated January 29, 2019 for additional important information and disclaimers about the McDaniel Reserve Report and the McDaniel Resource Report.

Gran Tierra's Statement of Reserves Data and Other Oil and Gas Information on Form 51-101F1 dated effective as at December 31, 2018, which will include further disclosure of its oil and gas reserves and other oil and gas information in accordance with NI 51-101 forming the basis of this press release, will be available on SEDAR at [www.sedar.com](http://www.sedar.com) on or before February 27, 2019.

Estimates of the Company's prospective resources in the Ayombero field are prepared by McDaniel in accordance with NI 51-101 and COGEH as of April 30, 2018. For positive and negative factors associated with the Ayombero field's prospective resources, as well as other relevant information, please see the Company's press release dated May 1, 2018.

Estimates of reserves provided in this presentation are estimates only and there is no guarantee that estimated reserves will be recovered. Actual reserves may be greater than or less than estimates provided in this presentation and differences may be material. Estimates of net present value of future net revenue attributable to Company's reserves do not represent fair market value and there is uncertainty that net present value of future net revenue will be realized and such estimates of reserves and future net revenue for individual properties may not reflect same confidence level as estimates of reserves and future net revenue for all properties, due to effect of aggregation. There is no assurance that forecast price and cost assumptions applied by McDaniel in evaluating Gran Tierra's reserves will be attained and variances could be material. References to thickness of "oil pay" or of a formation where evidence of hydrocarbons has been encountered is not necessarily an indicator that hydrocarbons will be recoverable in commercial quantities or in any estimated volume.

Prospective resources are those quantities of petroleum estimated, as of a given date, to be potentially recoverable from undiscovered accumulations by application of future development projects. Prospective resources have both an associated chance of discovery and a chance of development. Not all exploration projects will result in discoveries. The chance that an exploration project will result in the discovery of petroleum is referred to as the "chance of discovery." Thus, for an undiscovered accumulation the chance of commerciality is the product of two risk components-the chance of discovery and the chance of development. There is no certainty that any portion of the Prospective resources will be discovered. If discovered, there is no certainty that it will be commercially viable to produce any portion of the prospective resources.

The estimates of prospective resources provided in this presentation are estimates only and there is no guarantee that the estimated prospective resources will be recovered. Actual resources may be greater than or less than the estimates provided in this in this press release and the differences may be material. There is no assurance that the forecast price and cost assumptions applied by McDaniel in evaluating Gran Tierra's prospective resources will be attained and variances could be material. There is no certainty that any portion of the prospective resources will be discovered. If discovered, there is no certainty that it will be commercially viable to produce any portion of the prospective resources.

Estimates of prospective resources are by their nature more speculative than estimates of proved reserves and would require substantial capital spending over a significant number of years to implement recovery. Actual locations drilled and quantities that may be ultimately recovered from our properties will differ substantially. In addition, we have made no commitment to drill, and likely will not drill, all of the drilling locations that have been attributable to these quantities.

The following classification of prospective resources is used in this presentation:

- Mean Estimate represents the arithmetic average of the expected recoverable volume. It is the most accurate single point representation of the volume distribution.

Please see Gran Tierra's press release dated January 29, 2019 for additional information re: the following classifications for prospective resources:

- Low Estimate means there is at least a 90 percent probability (P90) that the quantities actually recovered will equal or exceed the low estimate.
- Best Estimate means there is at least a 50 percent probability (P50) that the quantities actually recovered will equal or exceed the best estimate.
- High Estimate means there is at least a 10 percent probability (P10) that the quantities actually recovered will equal or exceed the high estimate.

# PRESENTATION OF OIL & GAS INFORMATION

For a discussion of Gran Tierra's interest in the prospective resources, the location of the prospective resources, the product type reasonably expected, the risks and level of uncertainty associated with recovery of the resources, the significant positive and negative factors relevant to the estimate of the prospective resources, a description of the applicable projects maturity sub-categories and other relevant information regarding the prospective resources estimates, please see the GTE NI 51-101F1 and its press release dated January 29, 2019.

## Oil and Gas Metrics

This presentation contains a number of oil and gas metrics, including finding, development and acquisition ("FD&A") costs, NAV per share, operating netback, reserve life index, reserves per share and reserves replacement, which do not have standardized meanings or standard methods of calculation and therefore such measures may not be comparable to similar measures used by other companies and should not be used to make comparisons. Such metrics have been included herein to provide readers with additional measures to evaluate the Company's performance; however, such measures are not reliable indicators of the future performance of the Company and future performance may not compare to the performance in previous periods.

FD&A costs are calculated as estimated exploration and development capital expenditures in Colombia, divided by the applicable reserves additions both before and after changes in FDC. The FD&A cost calculation also includes the capital expenditures, reserves, and FDC related to acquisitions and divestitures in the total amounts. The calculation of FD&A costs incorporates the change in FDC required to bring proved undeveloped and developed reserves into production. The aggregate of the exploration and development costs incurred in the financial year and the changes during that year in estimated FDC, including those relating to acquisitions and dispositions, may not reflect the total FD&A costs related to reserves additions for that year. Management uses FD&A costs per BOE as a measure of its ability to execute its capital program and of its asset quality.

NAV per share is calculated as before tax NPV discounted at 10% plus estimated net working capital deficit and debt, excluding risk management assets and liabilities and investment in PetroTal Corp. shares, and number of shares of Gran Tierra's common stock outstanding. Management uses NAV per share as a measure of the relative change of Gran Tierra's NAV over its outstanding common stock over a period of time.

Operating netback is calculated as described in this presentation. Management believes that operating netback is a useful supplemental measure for investors to analyze financial performance and provide an indication of the results generated by Gran Tierra's principal business activities prior to the consideration of other income and expenses.

Cash flow means the GAAP line item "net cash provided by operating activities".

Reserve life index is calculated as reserves in the referenced category divided by the referenced estimated Colombia production. Management uses this measure to determine how long the booked reserves will last at current production rates if no further reserves were added.

Reserves replacement is calculated as reserves in the referenced category divided by estimated annual Colombia production. Management uses this measure to determine the relative change of its reserve base over a period of time.

ROCE is calculated as earnings before interest and taxes ("EBIT"; annualized, if the period is other than one year) divided by capital employed (total assets minus cash and current liabilities). For 2017, the impairment associated with the sale of the legacy businesses in Peru and Brazil is excluded from EBIT.

# PRESENTATION OF OIL & GAS INFORMATION

## **Disclosure of Reserves and Resources Information and Cautionary Note to U.S. Investors**

Unless expressly stated otherwise, all estimates of proved, probable and possible reserves and related future net revenue and prospective resources disclosed in this presentation have been prepared in accordance with NI 51-101. Estimates of reserves and prospective resources and future net revenue made in accordance with NI 51-101 will differ from corresponding estimates prepared in accordance with applicable U.S. Securities and Exchange Commission ("SEC") rules and disclosure requirements of the U.S. Financial Accounting Standards Board ("FASB"), and those differences may be material. NI 51-101, for example, requires disclosure of reserves and related future net revenue estimates based on forecast prices and costs, whereas SEC and FASB standards require that reserves and related future net revenue be estimated using average prices for the previous 12 months. In addition, NI 51-101 permits the presentation of reserves estimates on a "company gross" basis, representing Gran Tierra's working interest share before deduction of royalties, whereas SEC and FASB standards require the presentation of net reserve estimates after the deduction of royalties and similar payments. There are also differences in the technical reserves and resources estimation standards applicable under NI 51-101 and, pursuant thereto, the COGEH, and those applicable under SEC and FASB requirements. The SEC requirements strictly prohibit the Company from including prospective resources in filings with the SEC.

In addition to being a reporting issuer in certain Canadian jurisdictions, Gran Tierra is a registrant with the SEC and subject to domestic issuer reporting requirements under U.S. federal securities law, including with respect to the disclosure of reserves and other oil and gas information in accordance with U.S. federal securities law and applicable SEC rules and regulations (collectively, "SEC requirements"). Disclosure of such information in accordance with SEC requirements is included in the Company's Annual Report on Form 10-K and in other reports and materials filed with or furnished to the SEC and, as applicable, Canadian securities regulatory authorities. The SEC permits oil and gas companies that are subject to domestic issuer reporting requirements under U.S. federal securities law, in their filings with the SEC, to disclose only estimated proved, probable and possible reserves that meet the SEC's definitions of such terms. Gran Tierra has disclosed estimated proved, probable and possible reserves in its filings with the SEC. In addition, Gran Tierra prepares its financial statements in accordance with United States generally accepted accounting principles, which require that the notes to its annual financial statements include supplementary disclosure in respect of the Company's oil and gas activities, including estimates of its proved oil and gas reserves and a standardized measure of discounted future net cash flows relating to proved oil and gas reserve quantities. This supplementary financial statement disclosure is presented in accordance with FASB requirements, which align with corresponding SEC requirements concerning reserves estimation and reporting.

The Company's before tax net present values of 2P reserves prepared in accordance with NI 51-101 and COGEH and discounted at 10% ("PV-10") differs from its US GAAP standardized measure because SEC and FASB standards require that (i) the standardized measure reflects reserves and related future net revenue estimated using average prices for the previous 12 months, whereas NI 51-101 reserves and related future net revenue are estimated based on forecast prices and costs and that (ii) the standardized measure reflects discounted future income taxes related to the Company's operations. The Company believes that the presentation of PV-10 is useful to investors because it presents (i) relative monetary significance of its oil and natural gas properties regardless of tax structure and (ii) relative size and value of its reserves to other companies. The Company also uses this measure when assessing the potential return on investment related to its oil and natural gas properties. PV-10 and the standardized measure of discounted future net cash flows do not purport to present the fair value of the Company's oil and gas reserves. The Company has not provided a reconciliation of PV-10 to the standardized measure of discounted future net cash flows because it is impracticable to do so.

**Investors are urged to consider closely the disclosures and risk factors in the Company's Annual Report on Form 10-K, Quarterly Reports on Form 10-Q and in the other reports and filings with the SEC, available from the Company's website. These forms can also be obtained from the SEC's website at [www.sec.gov](http://www.sec.gov).**



**900, 520 – 3<sup>RD</sup> AVENUE SW  
CALGARY, ALBERTA, CANADA  
T2P 0R3**

**Investor Relations  
403-265-3221 [info@grantierra.com](mailto:info@grantierra.com)**